

## Addendum - 2 February 2006

Previously this project was named 'Harbour Bridge to City' project and there may be references in this document referring to this name or its abbreviation: HBTC.

The name of this project has since changed and is now referred to as 'Vic Park Tunnel'. Therefore, any reference to 'Harbour Bridge to City' or HBTC should now be taken to refer to Vic Park Tunnel or VPT.

# VIC PARK TUNNEL PROJECT

## VISUAL AND LANDSCAPE EFFECTS STATEMENT

### Proposed Acoustic Barrier from Freemans Bay



This statement is an addendum to the overall assessment of visual and landscape effects for the Vic Park Tunnel Project prepared by LA4 Landscape Architects. It has been prepared in response to Auckland City Council's request for further information relating to the Notices of Requirement for the Project. It relates specifically to the visual effects arising from the proposed acoustic barrier along the western edge of the motorway alignment next to Freemans Bay.

### THE PROPOSAL – Freeman's Bay Section

The proposed acoustic barrier is 2m in height and extends from the northeastern corner of Freemans Bay School northward approximately 180m along the edge of the motorway, near the approach to the tunnel portal. The acoustic barrier will be of timber construction. A mixture of scrubby vegetation occupies this edge of the motorway currently. Much of this vegetation within the designation boundary will be removed as part of the construction works and replaced on completion of the Vic Park Tunnel Project in accordance with the Landscape Mitigation Plan.

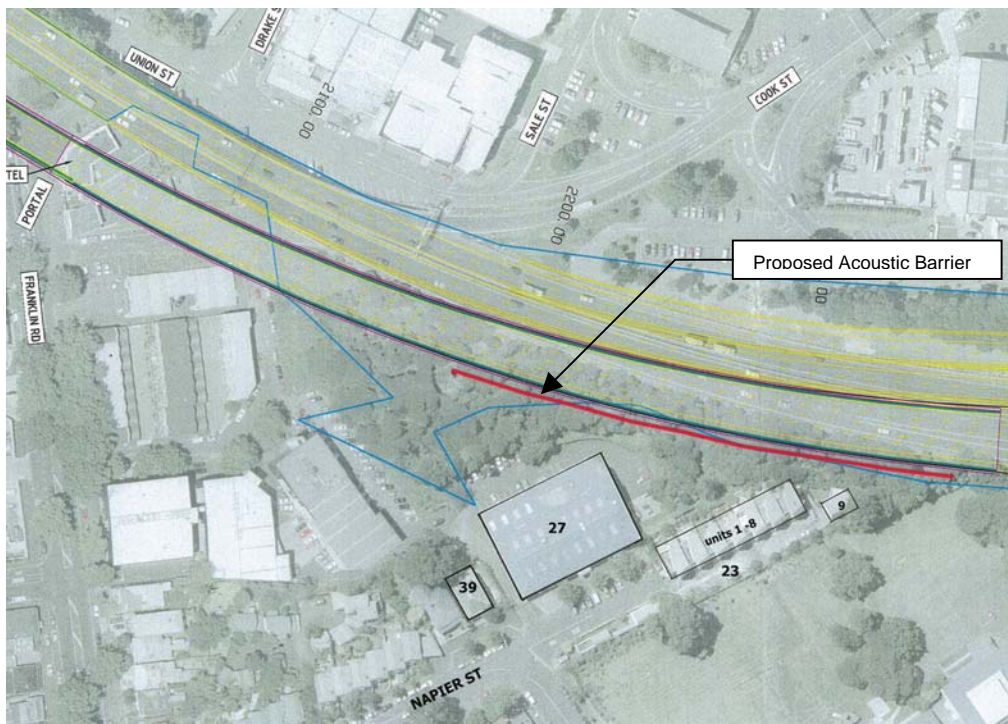


Figure 1 – Location Plan (nts)

## **VISUAL EFFECTS FROM FREEMANS BAY**

### **Viewing Audience**

The main permanent viewing audience for which the acoustic barrier will be a visible feature will be limited to the following:

#### *23 Napier St*

On this property is a row of town houses. These are set slightly down slope from the edge of the motorway. Units 1-8 form a terrace running east to west with views orientated toward the proposed acoustic barrier. In between the units and the proposed barrier however is an existing 1.8m high timber fence as well as a scattering of existing vegetation which will together with the landform limit, the visibility of the acoustic barrier from these units.

Unit 9 is a stand-alone townhouse at the eastern end of the property. From this unit the acoustic barrier will be clearly visible as there are few screening elements and the main focus from the unit is in towards the proposed barrier.

#### *27 Napier St*

This is a commercial property with a large warehouse type structure (*The Production Village*). The building and carpark area are set down within the landform with an intervening retaining wall and vegetation, much of which is outside the designation area. These factors will limit visibility of the acoustic barrier from this location.

#### *39 Napier St*

This is a residential property immediately to the west of *The Production Village*. From this property only the last 20-30m of the acoustic barrier are likely to be visible. This portion is also likely to be largely screened by existing vegetation.

#### *Freemans Bay School*

The acoustic barrier will have limited visual presence from Freemans Bay School as it will be largely screened by a relatively dense existing vegetative buffer which will be retained.

### **Visual Prominence/Intrusion**

The potential visual effects of the proposed acoustic barrier are likely to be minor due to the nature of the structure itself. Its scale is relatively insignificant in the context of the landscape setting and its appearance will be very similar to other timber fences which are found on most properties in the local area.

### **Mitigation**

Any visual effects of the proposed acoustic barrier could be readily mitigated by painting or staining the fence a recessive colour and/or appropriate planting.

## **CONCLUSIONS**

The proposed acoustic barrier would be seen by a small viewing audience consisting of the immediate neighbours. These views will be fragmented by landform, view orientation and screening elements. The acoustic barrier will be of a domestic scale and appearance and any adverse visual effects could be readily mitigated. Based on the preceding analysis I consider that the likely visual effects of the proposed acoustic barrier in this location will be less than minor.

**Jason Hogan**

**LA4 Landscape Architects**

23rd December 2005